



# SAMPLE-PRO®

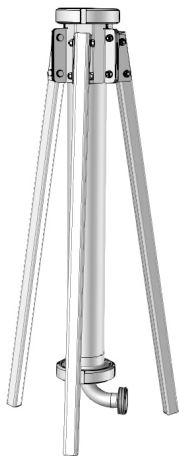
The professional sampler for roughage



Good roughage quality is the key to a healthy and balanced diet for our horses.

Because only those who know what they are feeding can take the nutritional needs of the horses into account.

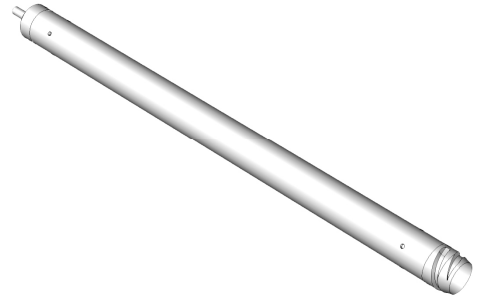
To ensure this, we have developed the SAMPLE-PRO®, a sterilizable sampler made of stainless steel.



It is able to take representative samples with the ideal fiber length from all roughage bales of any size.

It is easy to use, quick to empty and compatible with all commercially available drills.

Compatible with the hay steamer HD13 and HD16.



**SAMPLE-PRO®** consists of the following components:

- Sampler
- Hygienization station
- Material ejector
- SDS-Plus holder shaft
- Hexagon holder shaft



Scan the QR code to watch the video tutorials:



sterilization and  
sampling

**Your contact person:**

Jens von Erden

Phone: +49 7643 / 30 25 265

E-Mail: [heubedampfung@gg-technik.de](mailto:heubedampfung@gg-technik.de)

Homepage: [www.gg-technik.de](http://www.gg-technik.de)